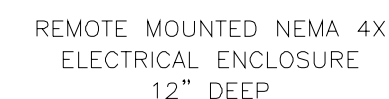
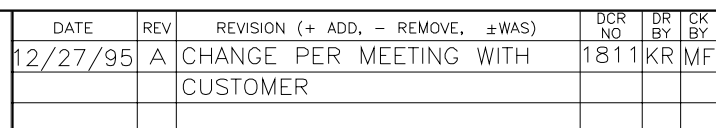
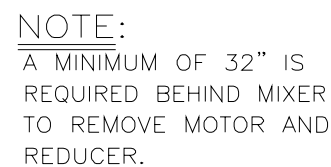



100/50 HP 1800/900 RPM TEFC SANITARY TOSHIBA DRIVE MOTOR.  
240 VOLTS, 3 PHASE, 60 HERTZ WITH FULL MAGNETIC CONTROLS.  
115 VOLT CONTROL CIRCUIT.  
NEMA 4X STAINLESS STEEL ELECTRICAL ENCLOSURE WITH CIRCUIT BREAKER.  
NEMA 4X PEDESTAL MOUNTED OPERATOR STATION FOR PANELVIEW 550 AND PLC SLC-5/04.  
SOLID STAINLESS STEEL BOWL ASSEMBLY.  
SOLID STAINLESS STEEL AGITATOR AND SHAFT.  
SOLID STAINLESS STEEL CANOPY.  
SOLID STAINLESS STEEL EXTERIOR.  
SOLID STAINLESS STEEL WELDED DRIP PAN UNDER BOWL.  
STAINLESS STEEL CLADDED LEGS.  
SOLID STAINLESS STEEL DX JACKET ON BOWL SHEET AND BOWL ENDS  
(R-22 REFRIGERANT).  
HYDRAULIC POWERED BOWL TILT - 120°. 20 1/  
SINGLE END DRIVE.  
AGITATOR SPEEDS: 70 RPM HIGH, 35 RPM LOW.  
SANITARY REMOVABLE SHAFT SEALS.  
FLOUR DUST VENT WITH SOCK.  
PNEUMATIC POWERED FLOUR GATE (VORTEX).  
HIGH/LOW SPEED JOG.  
FRONT AND REAR BOWL SEAL.  
GATES POLY CHAIN BELT DRIVE.  
MANUAL CENTRAL LUBE SYSTEM.  
FRONT AND REAR CANOPY STIFFENERS.  
SAFETY PROXIMITY SWITCHES ON END DOORS.  
BOWL DRAIN VALVE.  
PROGRAMMING FOR PLC AND PANELVIEW 550 SUPPLIED BY CUSTOMER.  
3 EXTRA RELAYS FOR INGREDIENT SYSTEM.



	PEERLESS MACHINERY CORPORATION SIDNEY, OHIO		
	TOLERANCES (UNLESS OTHERWISE SPECIFIED)		
DECIMAL .XX = ±.01	ANGLES ± 1°		FRACTIONAL 1/32
.XXX = ±0.05	BREAK ALL EDGES		
MATERIAL			DRAWN BY KR
			APPROVED BY MF
SCALE	TITLE		
1" = 1"	CERTIFIED DATA SHEET		
DATE	DRAWING NUMBER	FILE NUMBER	
11/16/95	CDS-957	D31-41	