

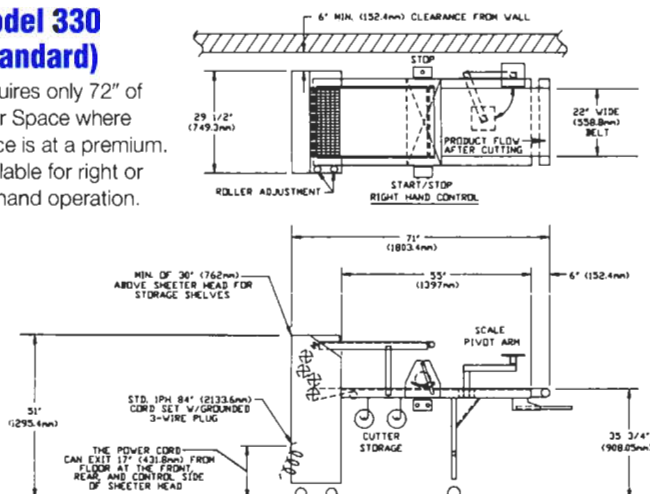


Model 330

Donut Production Table

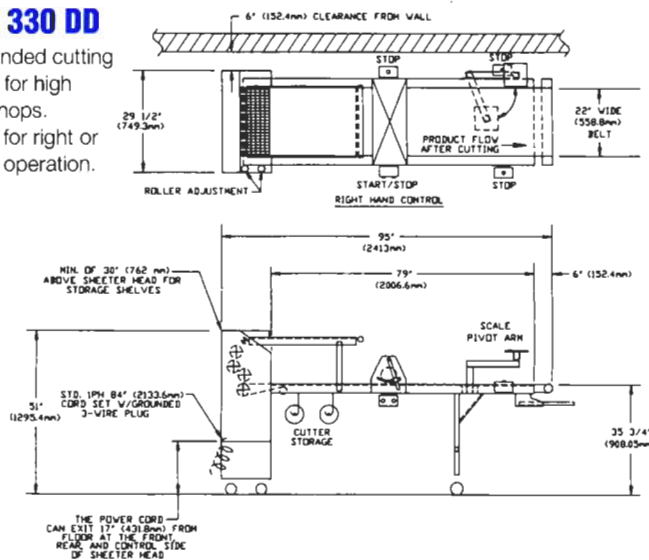
Model 330 (Standard)

Requires only 72" of Floor Space where space is at a premium. Available for right or left-hand operation.



Model 330 DD

With extended cutting conveyor for high volume shops. Available for right or left-hand operation.



SPECIFICATIONS	Model 330 Standard	Model 330 DD
Conveyor Belts	22 in (560 mm) wide - FDA Approved for Food Contact	
Cutting Conveyor Speed Range	1 - 38 cm/sec., 2 - 20 feet/minute	
Sheeting Rollers (2 sets)	23" long x 3.75" diameter	580mm long x 96mm diameter
Motor, Variable Speed	.75 HP.	.56 KW
*Electrical	200 - 240 volts, 50/60 Hz, Single Phase 3.8 Amp, 100 - 120 Volts, 50/60 Hz, Single Phase 7.6 Amp	
Operating Weight (approx)	800 lb. 363 kg.	850 lb. 386 kg.
Shipping Weight (approx)	950 lb. 431 kg.	1050 lb. 478 kg.
Domestic Shipping Container	89 long x 37 wide x 62 high in. 2260 long x 940 wide x 1580 high mm	120 long x 37 wide x 62 high in. 3050 long x 940 wide x 1580 high mm
Export Shipping Container	96 long x 37 wide x 62 high in. 2440 long x 940 wide x 1580 high mm	120 long x 37 wide x 62 high in. 3050 long x 940 wide x 1580 high mm

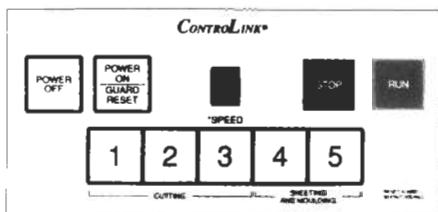
*UL Listing available. Contact Moline Customer Service.

Due to Moline's policy of continued product improvement, specifications are subject to change without notice.

ControlLink® — Another Innovative First from Moline

Optional ControlLink® keypad permits instant speed changes from high-speed sheeting to controlled cutting and make-up. Bright red digital display provides speed indication and notifies the operator of safety hazards such as an open guard or door. Smooth membrane panel design keeps flour and water out of electrics and easily wipes clean providing the ultimate in reliability and sanitation.

U.S. PAT # 5028854



STANDARD FEATURES

Mounted on Locking Casters – Cutting Station with Rubber Roller Backup – Infeed Dough Guide – Flour Bin – Heavy Steel Construction, Rich Hammertone Gray Enamel Finish – Safety Guards for all Machine Drive Components – BISSC Approved for Sanitation – Sealed Bearings Throughout, No Greasing – Variable Speed Drive – Cutter Storage Hanger for each cutter (3 max.)

Represented by

Printed in U.S.A.

Bulletin 595

Moline Machinery Ltd.
Baking and Food Processing Systems

P.O. Box 16308 • Duluth, Minnesota 55816-0308, U.S.A.
Phone (218) 624-5734 • FAX (218) 628-3853