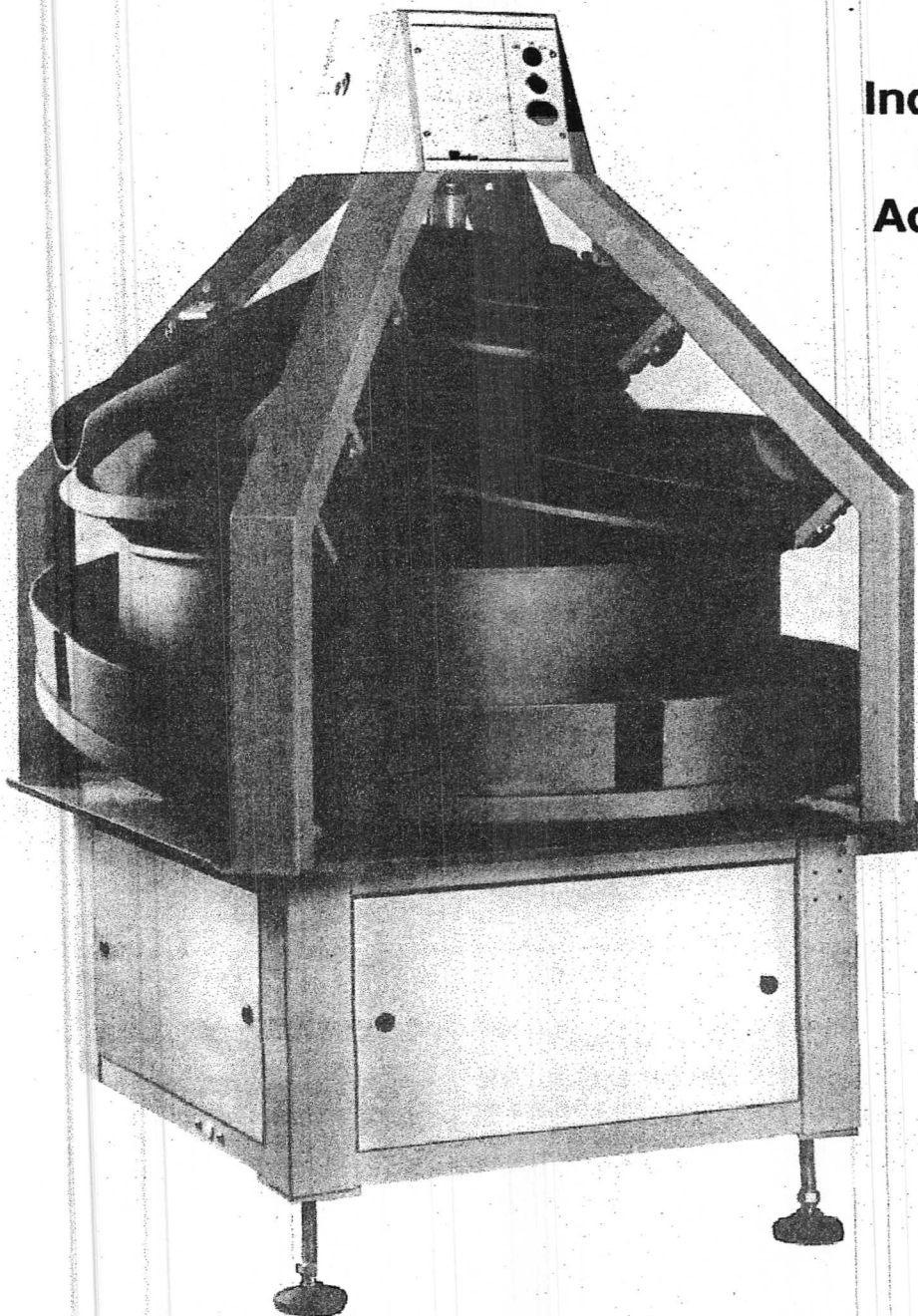


Benier

**Process
Range**
4 oz. – 2-1/2 lbs.

Model CO5L Conical Rounders



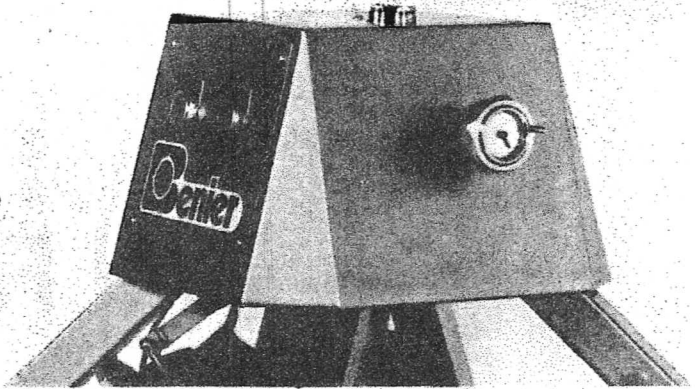
**Industrial Rounder
with Centrally
Adjustable Tracks**

**Capacity:
Up to 7200
pieces per hour**

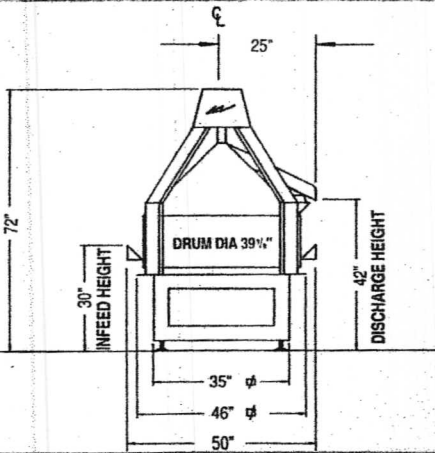
CO5L Conical Rounder

The CO5L is a rounder, suitable for a wide range of products. With our patented system of adjustable rounding tracks, the optimum in rounding can be achieved. These tracks can be adjusted to suit dough type and weight as well as rounding pressure required.

The rugged construction of the CO5L makes it ideally suited to industrial applications. The machine has been specially designed for ease of cleaning.



Conveniently Located Central Track Adjustment



Technical Information:

Capacity: Up to 7200 pcs/hr depending on dough piece size and consistency

Weight range: 4 oz. to 2-1/2 lbs.

Drive Motor: 2 hp direct gear motor/belt drive

Voltage: 208/230 volt/60 Hz (other voltages available)

Shipping Weight: 1800 lbs. (Class 85)

Features

- Centrally adjustable rounding tracks
- Teflon coated tracks
- Heavy duty V-belt drive
- Stainless steel covers
- ETL/BISSC Approved

Advantages

- One touch adjustment
- No dough buildup
- Safe, damage free
- Won't rust, easy to clean
- BISSC approved

Benefits

- Obtain optimal rounding for different weights
- Easier to clean
- Quiet
- Minimum maintenance
- Sanitary
- Long Life

Specifications subject to change without notice

Patent No. 4286939



Specialist in dough handling equipment

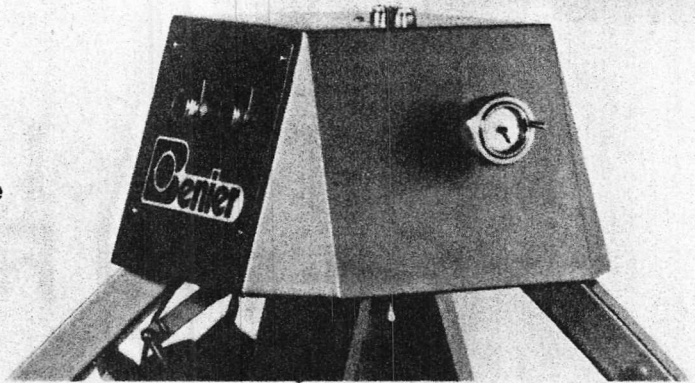
Office and Factory:
Benier U.S.A., Inc.
 1781 Westfork Drive, # 107
 LITHIA SPRINGS
 GEORGIA 30057

Phone (404) 739-0700
 Fax (404) 944-9190
 Toll Free Parts and Service
 Hotline 1-800-367-2504

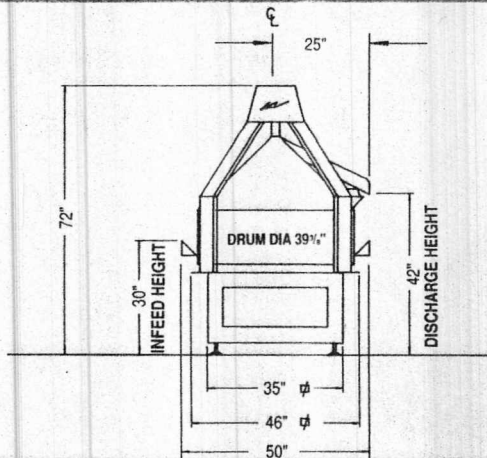
CO5L Conical Rounder

The CO5L is a rounder, suitable for a wide range of products. With our patented system of adjustable rounding tracks, the optimum in rounding can be achieved. These tracks can be adjusted to suit dough type and weight as well as rounding pressure required.

The rugged construction of the CO5L makes it ideally suited to industrial applications. The machine has been specially designed for ease of cleaning.



Conveniently Located Central Track Adjustment



Technical Information:

Capacity: Up to 7200 pcs/hr depending on doughpiece size and consistency

Weight range: 4 oz. to 2-1/2 lbs.

Drive Motor: 2 hp direct gear motor/belt drive

Voltage: 208/230 volt/60 Hz (other voltages available)

Shipping Weight: 1800 lbs. (Class 85)

Features

- Centrally adjustable rounding tracks
- Teflon coated tracks
- Heavy duty V-belt drive
- Stainless steel covers
- ETL/BISSC Approved

Advantages

- One touch adjustment
- No dough buildup
- Safe, damage free
- Won't rust, easy to clean
- BISSC approved

Benefits

- Obtain optimal rounding for different weights
- Easier to clean
- Quiet
- Minimum maintenance
- Sanitary
- Long Life

Specifications subject to change without notice

Patent No. 4286939



Specialist in dough handling equipment

Office and Factory:

Benier U.S.A., Inc.
1781 Westfork Drive, # 107
LITHIA SPRINGS
GEORGIA 30057

Phone (404) 739-0700
Fax (404) 944-9190
Toll Free Parts and Service
Hotline 1-800-367-2504