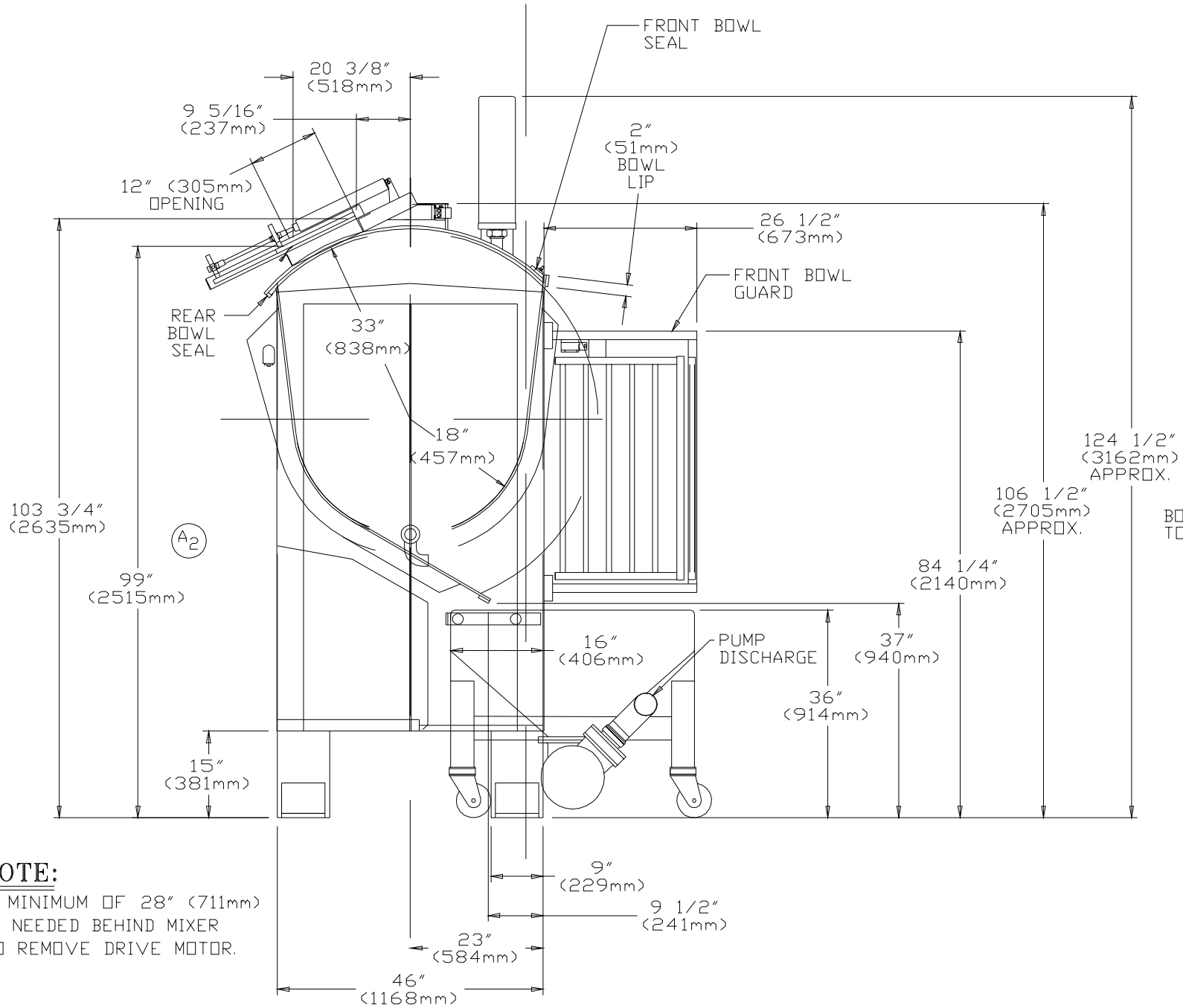
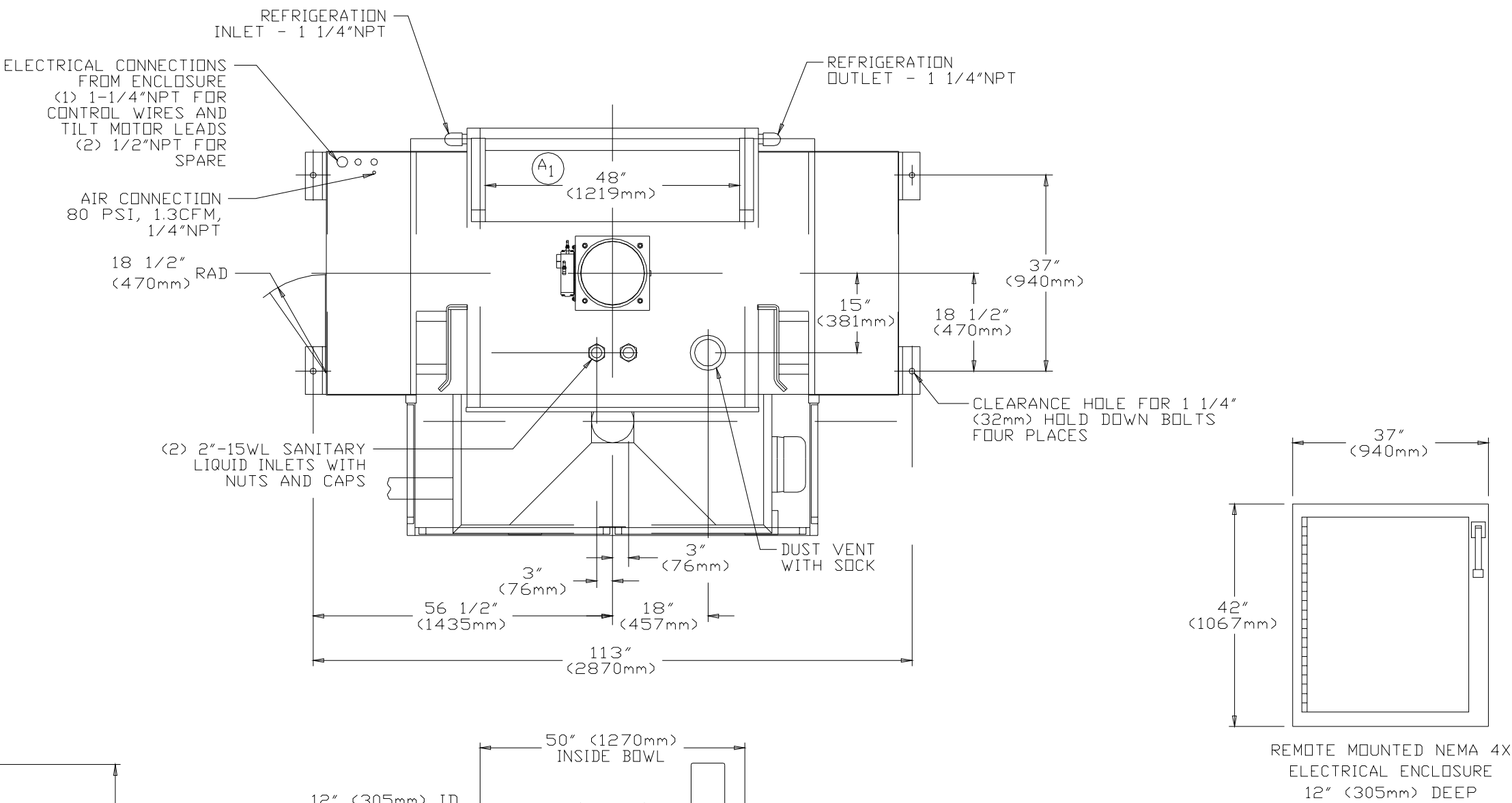


DATE	REV	REVISION (+ ADD, - REMOVE, ± WAS)	DCR No.	DR BY	CK BY
1/15/98	A	1) WAS 43" (1092mm)	4678	KR	MF
		2) WAS 97" (2464mm)			
4/17/98	B	ADDED PUMP LATCH	5028	KR	TB

MIXER FEATURES:

75/37.5 HP, 1500/750 RPM TEFC SANITARY DRIVE MOTOR.
 415 VOLTS, 3 PHASE, 50 HERTZ, 24VDC INPUTS AND 240VAC OUTPUTS.
 NEMA 4X STAINLESS STEEL STARTER ENCLOSURE WITH CIRCUIT BREAKER AND PROGRAMMABLE LOGIC CONTROLLER - (AB SLC-500).
 SOLID STAINLESS STEEL BOWL ASSEMBLY.
 SOLID STAINLESS STEEL AGITATOR AND SHAFT.
 SOLID STAINLESS STEEL CANOPY.
 SOLID STAINLESS STEEL EXTERIOR.
 SOLID STAINLESS STEEL END DOORS.
 SOLID STAINLESS STEEL WELDED-IN DRIP PAN AND FRONT PANEL.
 SOLID STAINLESS STEEL LIQUID COOLING JACKET ON BOWL SHEET AND BOWL ENDS.
 HYDRAULIC POWERED BOWL TILT - 120°.
 SINGLE END CHAIN DRIVE WITH AUTOMATIC ELECTRONIC CHAIN OILER.
 AGITATOR SPEEDS: 70 RPM HIGH, 35 RPM LOW.
 ELECTRONIC DIGITAL TIMERS.
 ELECTRONIC DIGITAL THERMOMETER - TO READ IN CELSIUS.
 SANITARY REMOVABLE SHAFT SEALS.
 MANUAL CENTRAL LUBE SYSTEM.
 SAFETY SWITCHES ON END DOORS.
 HIGH/LOW SPEED JOG OPERATION.
 FRONT AND REAR BOWL SEALS.
 EXPORT CRATING.
 CE CERTIFIED.
 PNEUMATIC POWERED REAR SPONGE DOOR.
 BOWL DRAIN VALVE.



NOTE:
 A MINIMUM OF 28" (711mm)
 IS NEEDED BEHIND MIXER
 TO REMOVE DRIVE MOTOR.

PEERLESS MODEL HS13HD TRIPLE ROLLER BAR MIXER
 FOR: EUROBUNS LTD - ENGLAND
 CMO No: 97115

<div> <div> PEERLESS MACHINERY CORPORATION SIDNEY, OHIO </div> </div>			
TOLERANCES (UNLESS OTHERWISE SPECIFIED) DECIMAL .XX= ±.01 ANGLES ±1° FRACTIONAL ±1/32 XXX= ±.005 BREAK ALL EDGES			
MATERIAL	DRAWN BY KR		APPROVED BY DT
SCALE	TITLE		
3/4"-1'	CERTIFIED DATA SHEET		
DATE	DRAWING NUMBER	FILE NUMBER	
12/22/97	CDS-1255	D41-85	