

Rub A Dub Dub



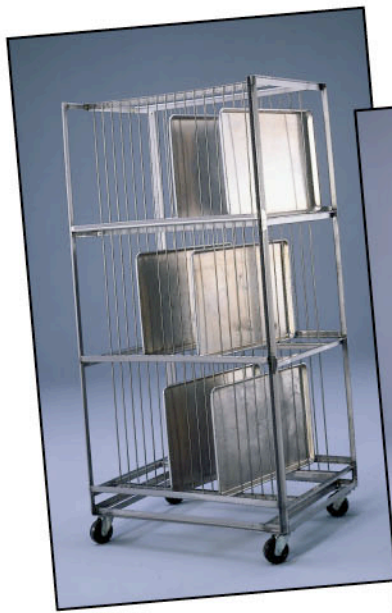
Powerful, Efficient and Economical To Operate

Model RW 1548

The high capacity of the LVO RW1548 makes this pan washer a truly outstanding piece of equipment for high producing bakeries, restaurants or other food operations. A powerful 5 h.p. and 10 h.p. dual pump system on the model delivers a high pressure wash that literally blasts away residue on pots, pans, racks, bowls, grocery carts and utensils leaving them positively clean and completely sanitized.

The LVO RW1548 is fully automatic, easy to install and economical to operate. It can be operated easily by any employee. The RW1548 is made of 12 and 14 gauge stainless steel and is designed to last for years. It can substantially reduce your labor costs and in many cases it will pay for itself in one year with the savings.





Bun Pan Rack



Cake Pan Rack

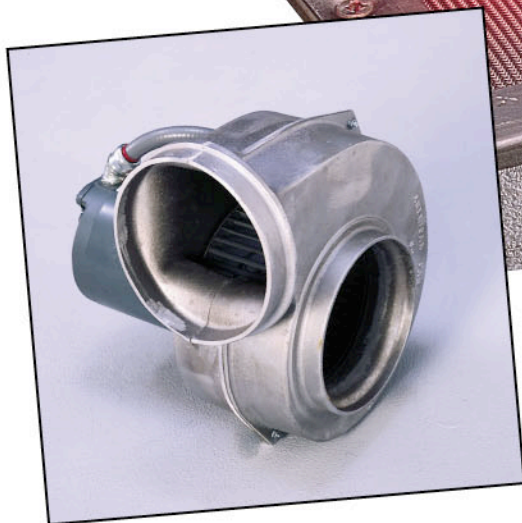
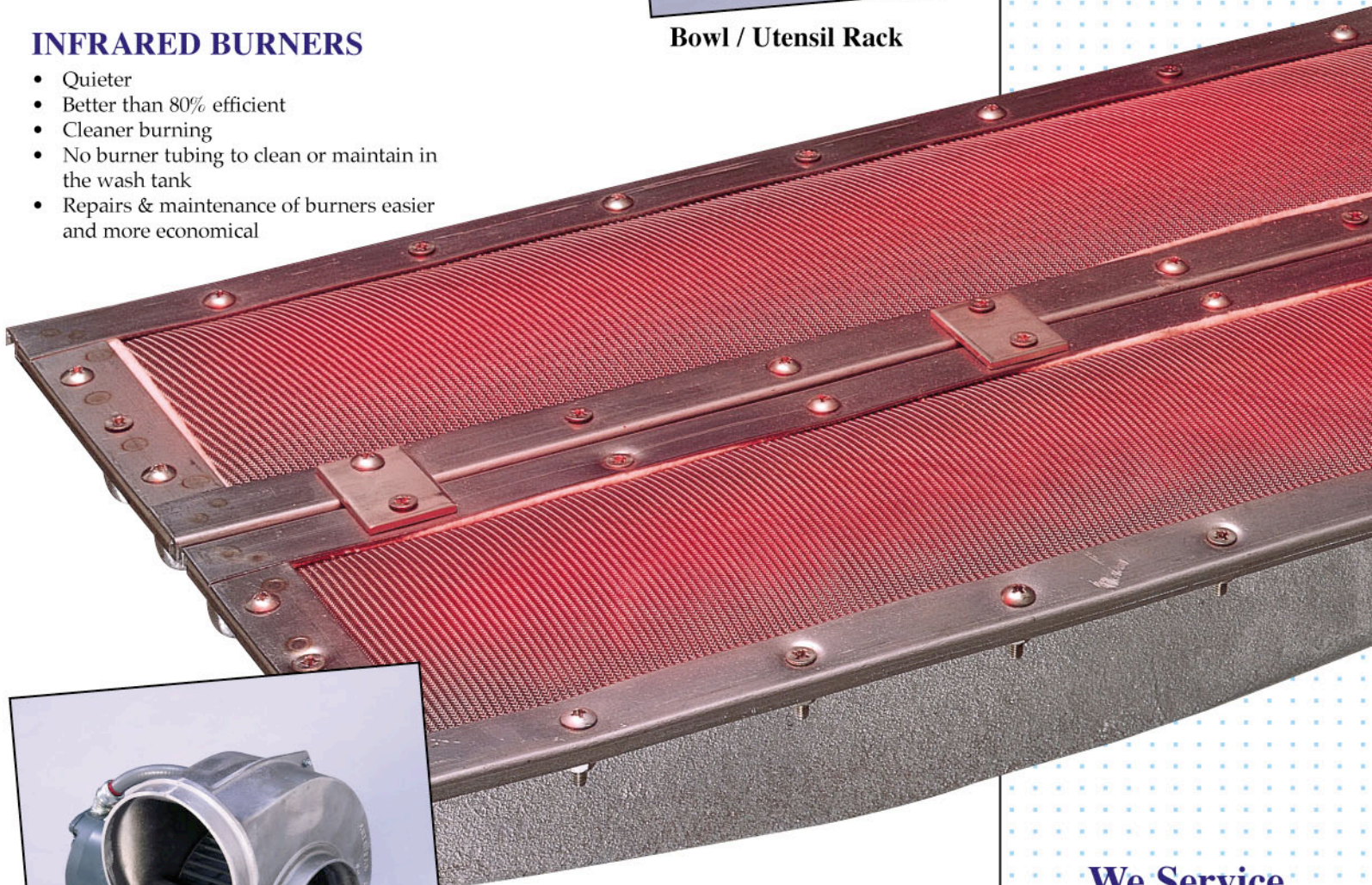


Bowl / Utensil Rack

High-Volume Pot & Pan Washer

INFRARED BURNERS

- Quieter
- Better than 80% efficient
- Cleaner burning
- No burner tubing to clean or maintain in the wash tank
- Repairs & maintenance of burners easier and more economical



POWER VENTING

Remove steam from your washer quickly and efficiently before it enters your work area. The 700 CFM American Fan is sure to work for you.

**We Service
What We Sell!**

SPECIFICATIONS

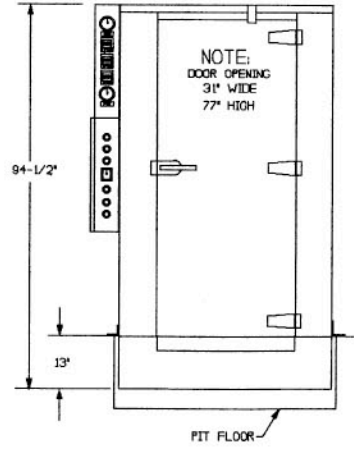
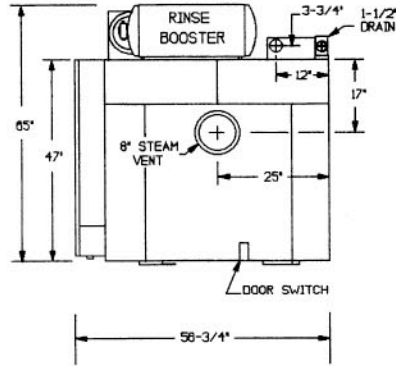
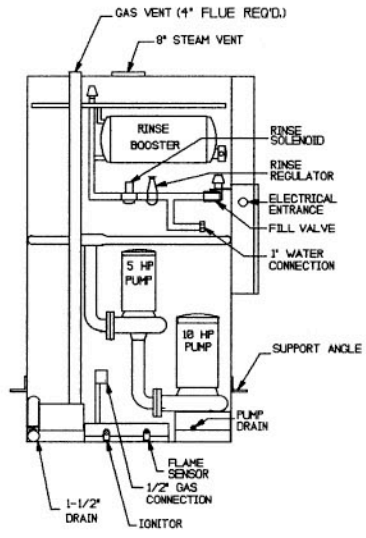
Wash Cap: 48 pans
Pump: 1-5 H.P. & 1-10 H.P.
 208, 230, 460V, 60 cycle
 3 phase- recirculates app.
 250 G.P.M.
Timers: Wash, delay, rinse -
 all adjustable
Electrical Components:
 U.L. approved
Wash Tank: 65 gal. cap. -
 electric, steam, or gas
Construction: 12 and 14
 G.A. Stainless Steel
Rinse Tank: S.S. with two 9
 KW electric booster heater
 to boost 120° water to 180°-
 195° sanitizing rinse water.

NOTE:
 Recommended
 Clearances

Top	36"
Front	36"
Sides	16"
Rear	12"
Bottom	6" *

*Gas machines must be installed
 with 6" adjustable legs when
 placed on a combustible floor.

**We Service
 What We Sell!**



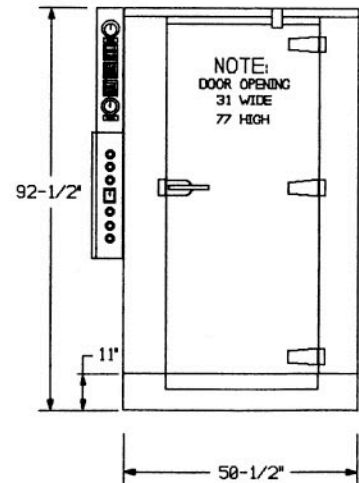
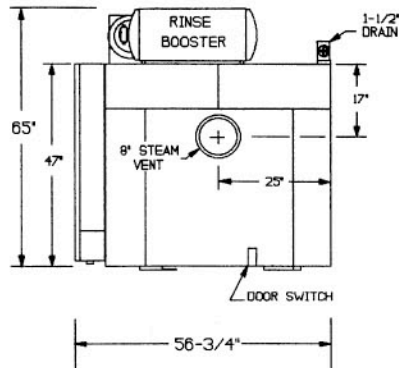
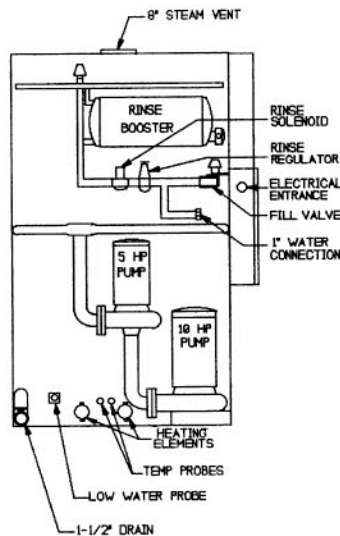
RW1548 Gas

Total Amperage

	208V	230V	460V
Electric	133.1	122.3	62.1
Gas or Steam Injected	95.6	88.4	45.2
Recirculating Steam	45.6	43.2	22.6

Gas Rating 66,000 BTU
 Injected Steam Rating- 37 lbs @ 10 to 15 psi
 Recirculating Steam - 76 lbs @ 10 to 15 psi
 Rinse Tank Cap. - 20 gal.
 60 sec. rinse @ 20 psi
 14 gal/cycle

RW1548 Electric



LVO MANUFACTURING INC.

P.O. Box 188, 808 N 2nd Avenue E
 Rock Rapids Iowa 51246
 Phone: 712/472-3734 or 712/472-3735
 Toll Free 1-800-346-5749
 Fax 712-472-2203

