

98000 Series Service Wallcases

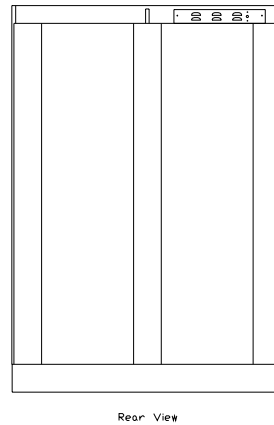
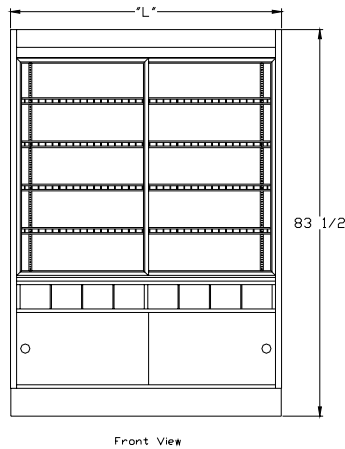
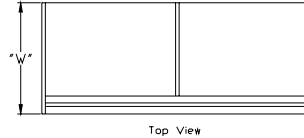
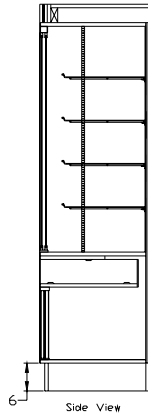


Features & Finishes:

- Anodized Aluminum Trim
- Aluminum Framed, Top Hung, Sliding Glass Doors
- White Wire Shelves (4)
- 3/4" Sliding Storage Doors
- 6" Black Kick Base
- Adjustable Bag Bins
- Unfinished Exterior Back
- White HPL Interior Deck
- White Interior
- White HPL Finish Front & Ends
- Side Lights with Lamps & Shields
- 12" Cord, Plug & Switch
- U.L. & C.U.L. Listed



98000 Series Service Wallcases



| Model No. | Dimensions: L X W X H | Rows of Shelves | Est. Crated Weight | No. of Pan Capacity | Case Options: |
|------------|--|--------------------|-----------------------|------------------------|--|
| 98060-24 | 58 1/2" X 24" X 83 1/2" | 4 | 610 lbs. | 10 | 1. Mirror Back 2. Extra Row Wire Shelf 3. Top Light 4. Shelf Lights 5. Adjustable Wood Shelf 6. "ETL" Sanitation Listed (Conforms to NSF STD-2) |
| 98062-30 | 62 1/8" X 30" X 83 1/2" | 4 | 710 lbs. | 15 | |
| 98082-30 | 80 1/8" X 30" X 83 1/2" | 4 | 950 lbs. | 20 | |
| 98060-24RL | 58 1/2" X 26" X 83 1/2" | 4 | 630 lbs. | 10 | |
| 98062-30RL | 62 1/2" X 32" X 83 1/2" | 4 | 740 lbs. | 15 | |
| 98080-30RL | 80 1/8" X 32" X 83 1/2" RL = (Rear Load Mirror Doors) | 4 | 980 lbs. | 20 | |

Specifications Subject to change without notice



P. O. BOX 470
Union, MO 63084

Phone: 1.800.325.0775
Fax: 1.636.583.4067